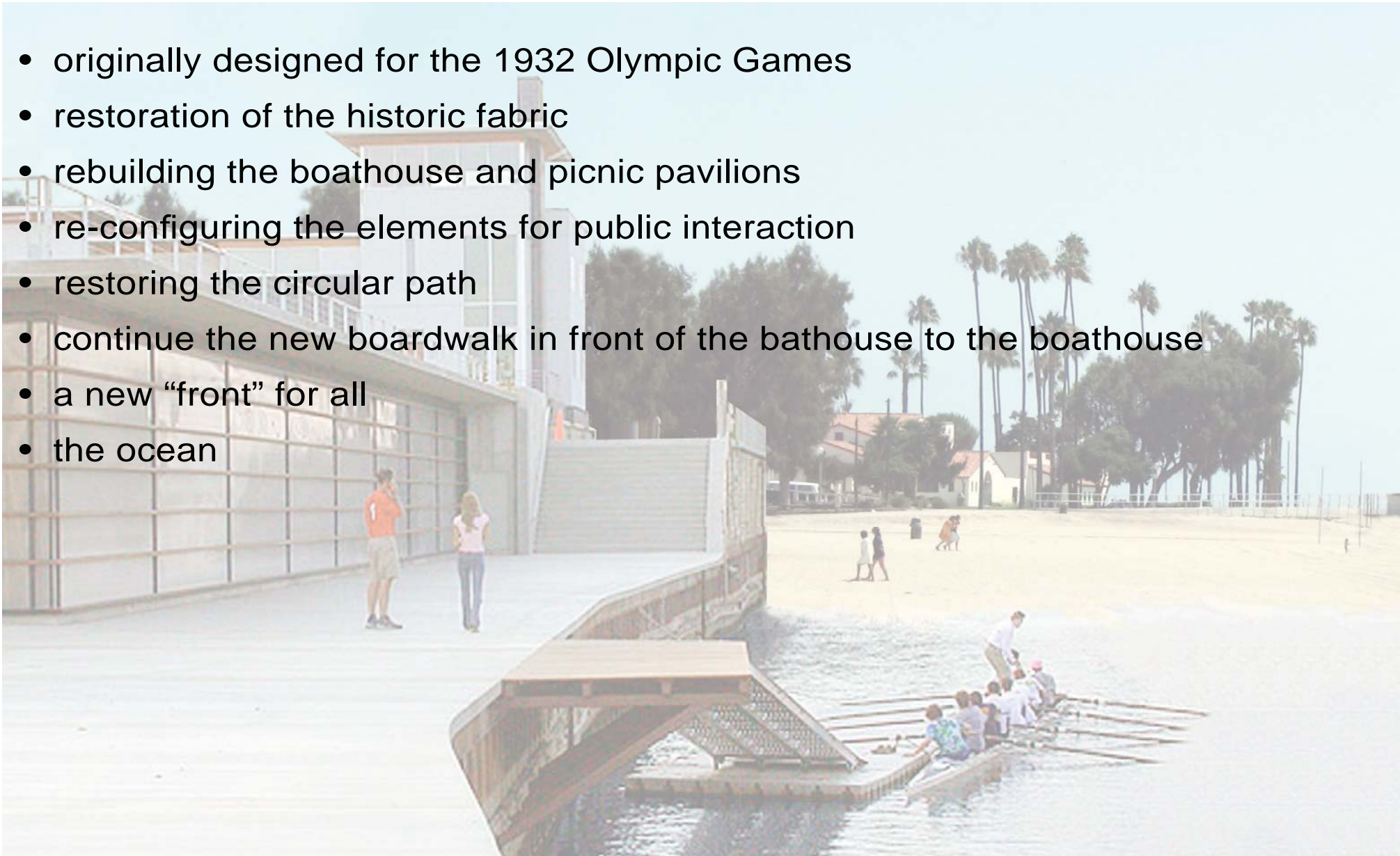


Cabrillo Boathouse and Beach Improvements



Key Points & Concerns

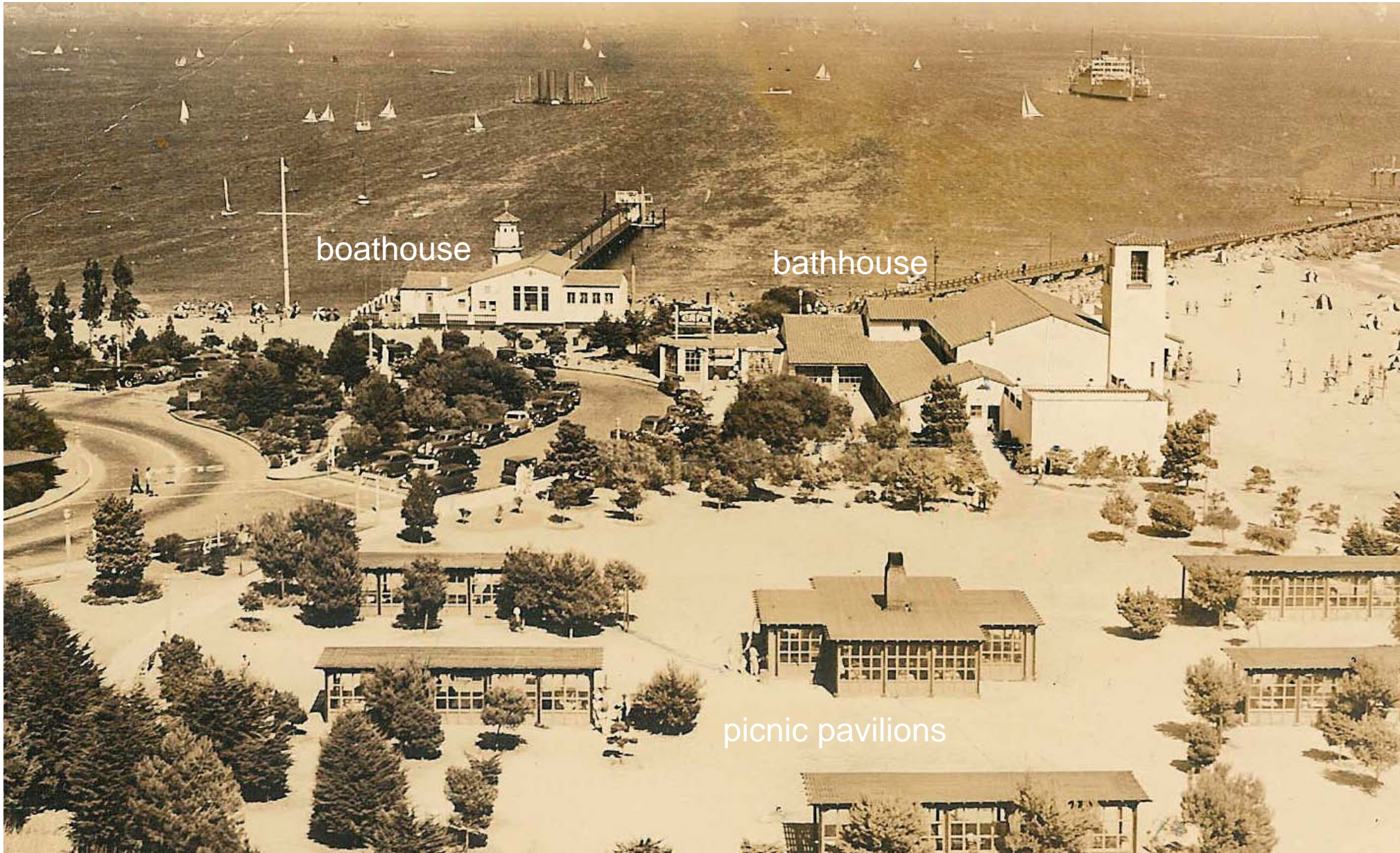
- originally designed for the 1932 Olympic Games
- restoration of the historic fabric
- rebuilding the boathouse and picnic pavilions
- re-configuring the elements for public interaction
- restoring the circular path
- continue the new boardwalk in front of the bathhouse to the boathouse
- a new “front” for all
- the ocean



Outer Beach - circa 1940



Cabrillo Beach - circa 1940



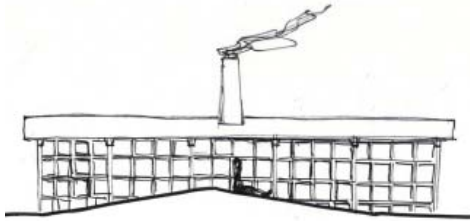
Vision Sketch



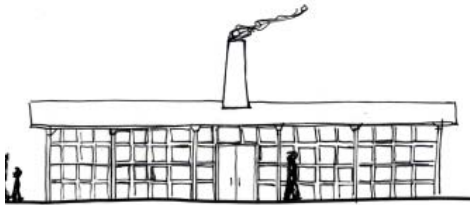
Proposed Site Plan



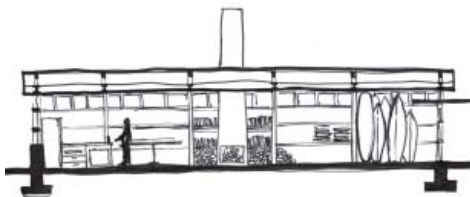
Vision Sketch - Beach Pavilions



typical elevation



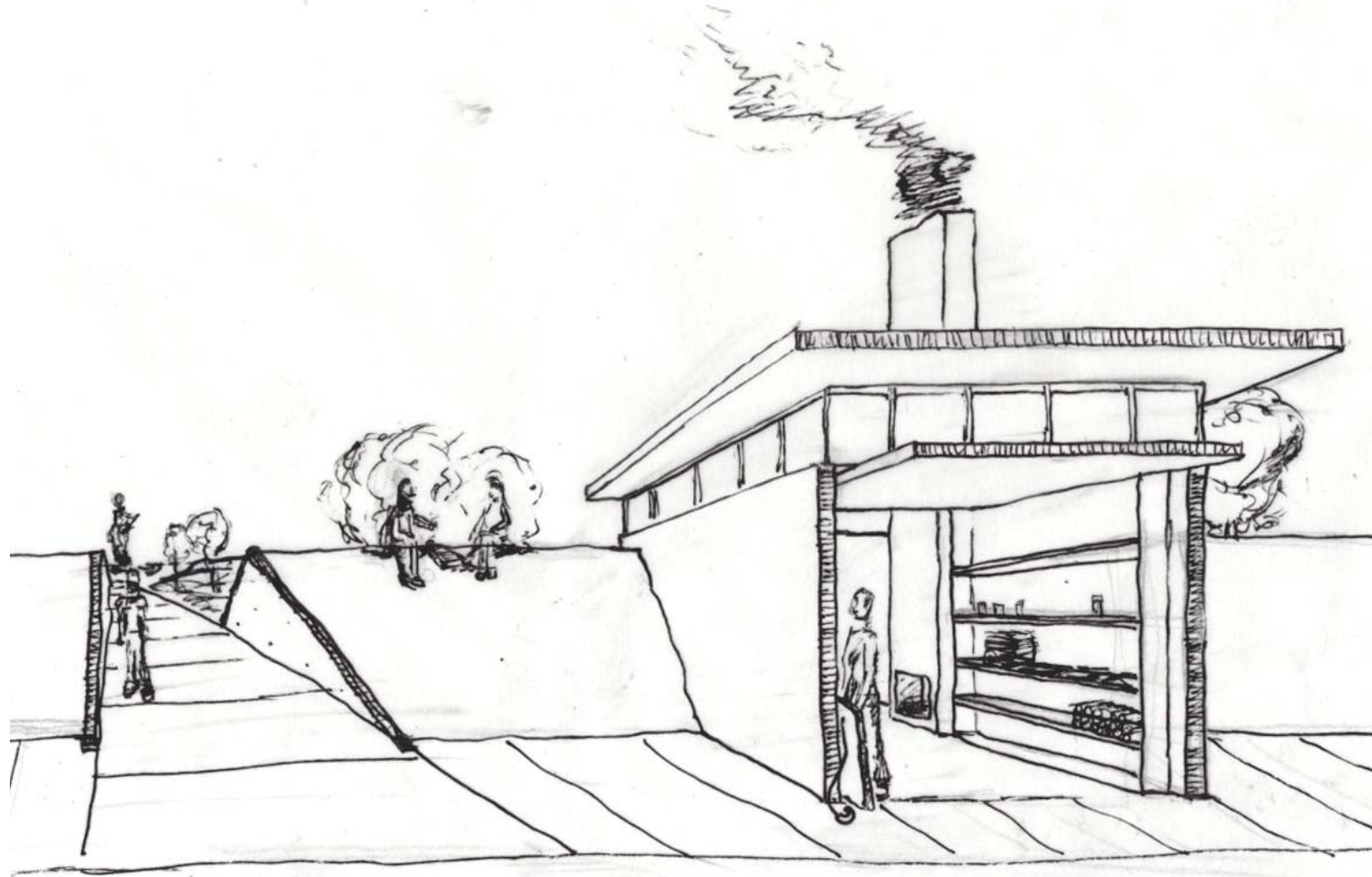
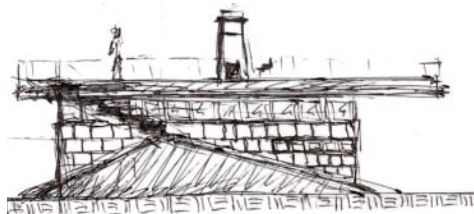
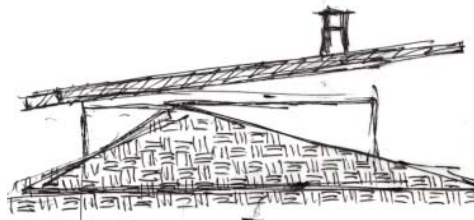
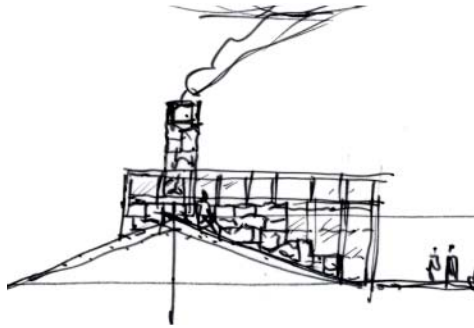
typical elevation



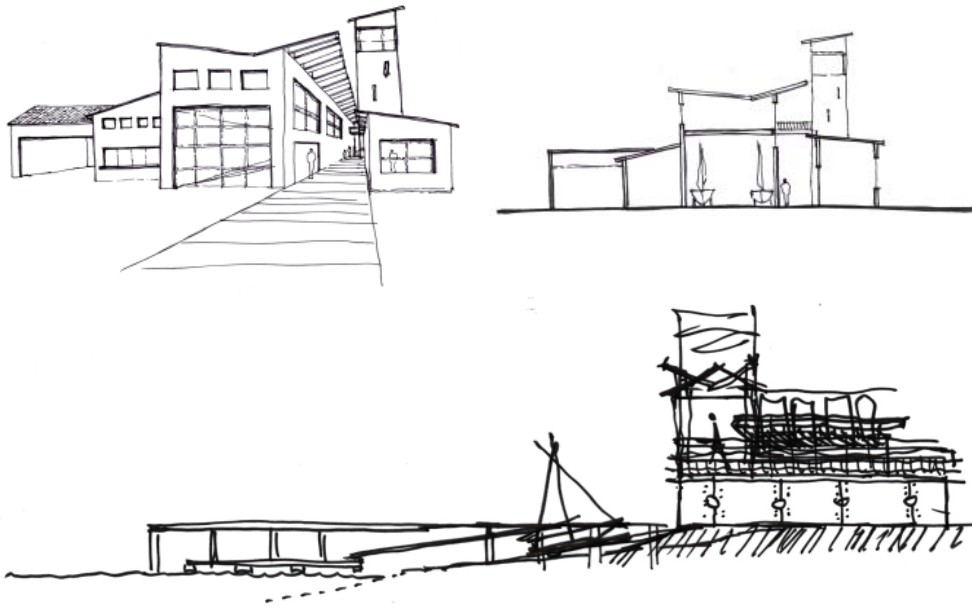
typical section



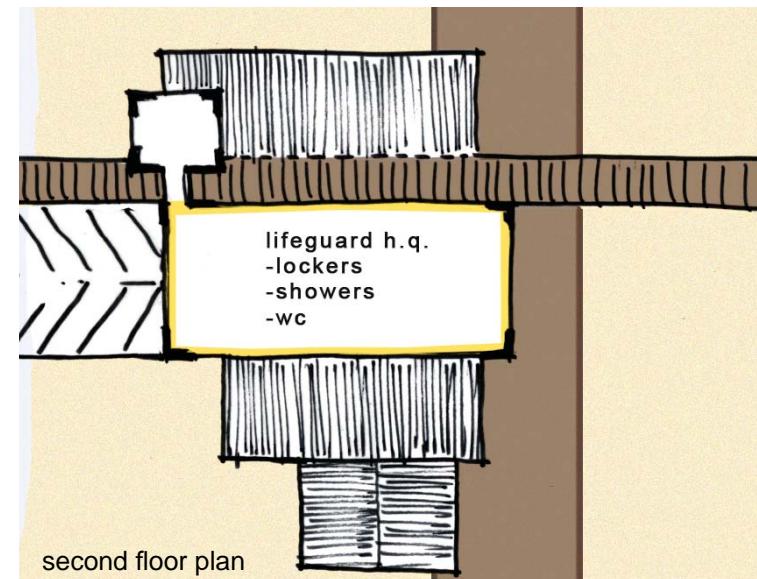
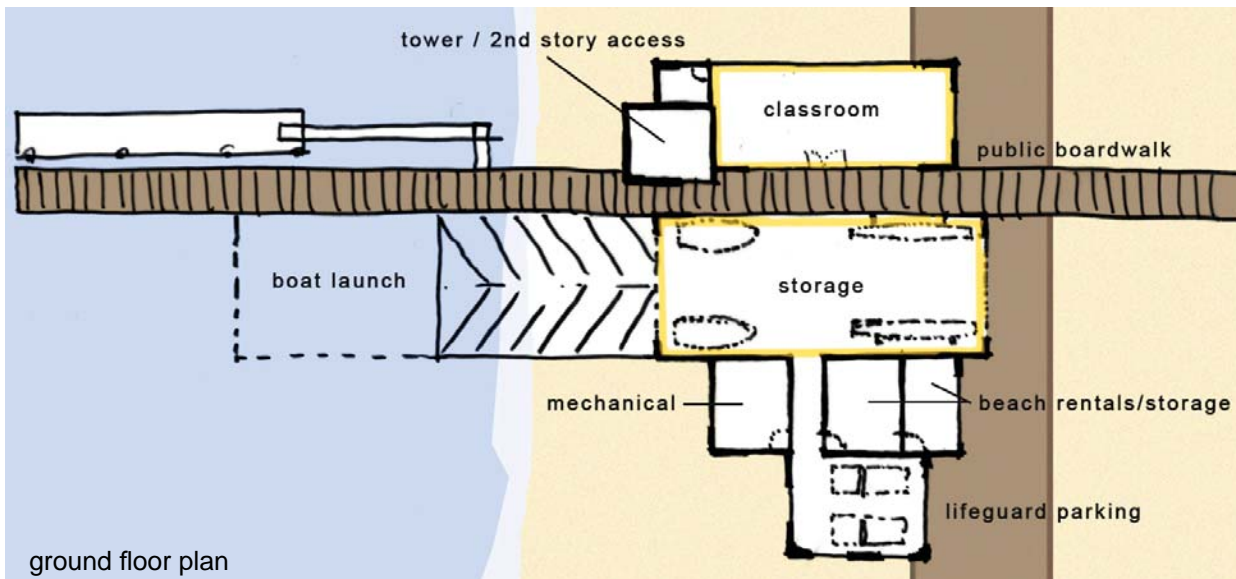
Process Sketches - Picnic Pavilions



Vision Sketches - Boathouse



classroom



Proposal Brief

As one may observe from the following historic photographs, Cabrillo Beach was once comprised of a boathouse, picnic pavilions, and bathhouse, all **originally designed for the 1932 Olympic Games**. Today, however, all that is left of this great triad of public elements is the bathhouse itself. Since the outset of talks with the Cabrillo Boosters concerning proposed construction at Cabrillo Beach, it has become clear that what is of extreme importance is the **“restoration of the historic fabric.”** After studying historic photographs and doing a few initial sketches, we began to think about what it means to “restore the historic fabric” to Cabrillo Beach.

For us, restoring the historic fabric means not only **rebuilding the boathouse and picnic pavilions** but also **re-configuring them along** with the existing bathhouse into an arrangement that is truly public. Learning from the historic photographs, one of our first moves (as one can see in the proposed site plan) is to bring back the **circular path** that once ran between the picnic pavilions and the beach and **continue the new boardwalk in front of the bathhouse to the boathouse**. We feel that this path creates the necessary physical connection between the three building areas so that visitors may access them more freely, while at the same time creating a **new “front” for all of the elements along the ocean**. Also, our new plan shows the picnic pavilions arranged around a central, sandy, beach space... again with the intent to create a more public gathering area with pavilions that at one time may act independently of one another yet at the same time are constantly in relation to the greater public space in the middle. With the design and arrangement of these buildings we hope to enable the 3 entities (boathouse, bath house, picnic pavilions) to do what they have historically done: provide San Pedroans and visitors alike with a place for recreation in a safe public environment.

