

**Keep This Flier In  
Your Emergency Go-Kit**

**Prepare A Go-Kit Today**

Assemble a multi-day kit to take with you when you evacuate. Include:

- ◆ Food and Water
- ◆ Medications and copies of prescriptions
- ◆ A change of clothes and comfortable Shoes
- ◆ Personal hygiene and first aid supplies
- ◆ Special items such as diapers, formula or special food requirements
- ◆ Pet carrier, leash and pet food
- ◆ Copies of your important documents

Keep the items that you would most likely need for evacuation in a backpack, duffle bag or a wheeled cooler in an easily accessible location.

**City of Los Angeles  
Emergency Preparedness Department**

200 N. Spring Street, Rm 1533  
Los Angeles, CA 90012  
[www.lacity.org/epd](http://www.lacity.org/epd)  
213-978-2222  
TTY Services: 213-847-0652



**City of Los Angeles**

**HARBOR AREA**

**Tsunami  
Emergency  
Information**



**How to prepare for  
and  
Survive a Tsunami**

June 2007



**TSUNAMI**

**WHAT IS A TSUNAMI?**

A tsunami is a *series* of waves, usually caused by an earthquake. The first wave may **NOT** be the largest. The timing between the waves may vary from minutes to several hours apart. The danger from a tsunami can last for several hours after the first wave.

All low-lying coastal areas, including the Los Angeles Harbor, Venice, and West Los Angeles Beaches, can be struck by a tsunami.

The force of a tsunami often carries boats, debris and heavy rocks a great distance inland. This water and debris moves with great force and can kill or injure people.

**HOW SHOULD YOU REACT ?**

An earthquake near our coast could cause a LOCAL TSUNAMI. The first wave could arrive within 10 minutes. If you feel a strong earthquake near the beach **EVACUATE THE RED AREA SHOWN ON THE MAP INSIDE!** If you're on the beach, leave your car and walk or run inland to higher ground immediately.



An earthquake elsewhere in the Pacific Ocean (e.g., near Alaska, Chile, Hawaii or Japan) could create a PACIFIC-WIDE TSUNAMI. The waves may reach our coastline within an hour. As soon as you hear a Tsunami Warning, pack up your family and pets and drive inland.



*Evacuate immediately when a Tsunami Warning is issued — Traffic jams may occur.*

**TSUNAMI SIGNS**

The City is in the process of fabricating signs that will be posted on the beach and on major streets along the coast to help residents and visitors identify the Tsunami Hazard Zone and Evacuation Routes.



**HOW WILL YOU KNOW A TSUNAMI IS COMING?**

- ◆ Tsunami WATCHES and WARNINGS are issued by the National Oceanic & Atmospheric Administration (NOAA). Radio and TV stations will carry official shoreline evacuation instructions through the Emergency Alert System (EAS).
- ◆ Los Angeles City officials may order an evacuation when tsunami WARNINGS are issued if time permits.
- ◆ If an evacuation is ordered and time permits, law enforcement officials will communicate directly with the public to evacuate areas in red on the map.
- ◆ Tune in to your local news station on radio or television for the Emergency Alert System message.
- ◆ If you live or work in the tsunami evacuation area, the City urges you to purchase (\$50) a NOAA weather radio with tone, voice or visual alert feature and Specific Area Message Encoding (SAME) to keep you informed of local tsunami WATCHES and WARNINGS.

**WHAT SHOULD YOU DO?**

**Move away from low-lying coastal areas when you feel a strong earthquake or if a Tsunami Warning is issued.**

- ◆ **Check the map** to see if you live, work or attend school in the Tsunami Zone.
- ◆ **Plan an evacuation route** from your home, school, workplace, or any other place where a tsunami presents a risk.
- ◆ **If you are on or near the beach** and feel a strong earthquake, **DROP, COVER, and HOLD** on. Watch for falling objects and wait until the earthquake is over. Immediately move inland to higher ground. Don't wait for a Tsunami Warning to be issued.

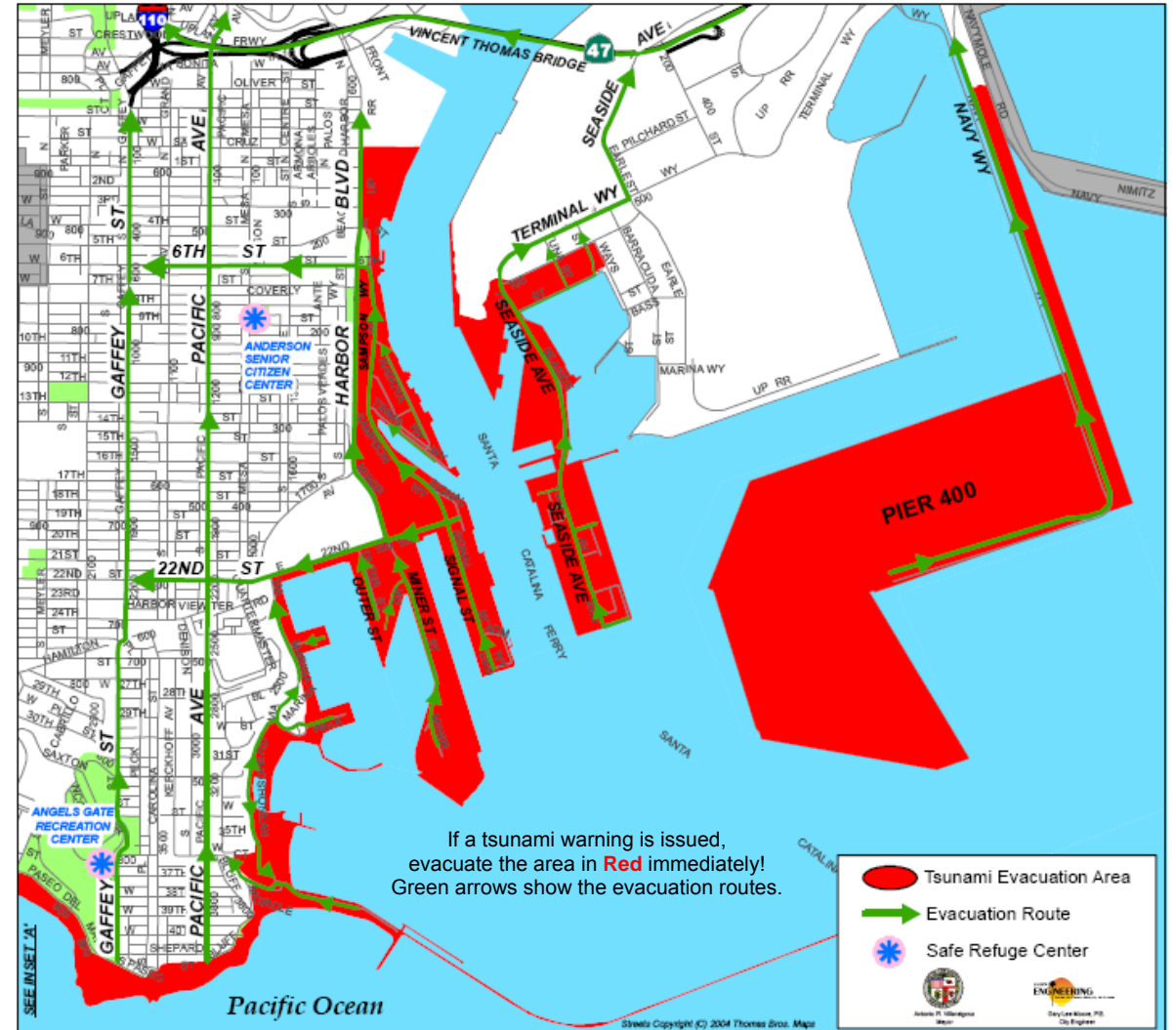
- ◆ **If you are in the Tsunami Evacuation Zone** when a Tsunami **WARNING** is issued, **EVACUATE**. Follow evacuation routes to a safe inland location.
- ◆ **Follow evacuation instructions.** As you evacuate, listen to your car radio for additional information and updates. Remember to take your Go-Kit.
- ◆ **Los Angeles Unified School District** schools within the Tsunami Evacuation Area will activate their existing Safe School Plans when a Tsunami **WARNING** is issued. If an evacuation is ordered and time permits, the schools inside the Evacuation Area will be evacuated to another LAUSD school that is not in the evacuation area.
- ◆ **Following the evacuation,** you will be notified when and where to pick up your children.
- ◆ The City urges all businesses, private and governmental offices, private schools, and care centers in the tsunami evacuation area to develop and maintain tsunami evacuation plans.
- ◆ **Do NOT call 9-1-1.** Listen to the radio for emergency information.
- ◆ **If you are unable to move inland,** find refuge above the third floor in a high-rise, multi-story, reinforced-concrete building.
- ◆ **Mariners in shallow waters or harbors** should move to deep water (600 feet or greater) if there is enough time and weather conditions are suitable.
- ◆ Do not return home until authorities say it is safe to do so.

**Fortunately, a tsunami is a rare event. You can protect your family by evacuating promptly if a Tsunami Warning is issued.**

*This information could save your life!*

*Share it with your family, neighbors & friends.*

For more information on a Tsunami, visit <http://WCATWC.ARH.NOAA.GOV>



**Tsunami Evacuation Area**  
**San Pedro & Harbor Area**